



INTERNATIONAL
TRADE
ADMINISTRATION

U.S. Foreign-Trade Zones Board

Overview for CBP: Alternative Site Framework (ASF)



INTERNATIONAL
TRADE
ADMINISTRATION

The Structure of the FTZ Board

- FTZ Board (FTZB) is comprised of Commerce and Treasury departments.
- FTZB has long delegated to Executive Secretary (staff director) authority to approve “minor boundary modifications” (MBMs).
- CBP has advisory role to FTZB, including local CBP providing comments on all requests for new FTZ sites.



INTERNATIONAL
TRADE
ADMINISTRATION

The “What” and “Why” of the ASF:

What?

- FTZB adopted an optional alternative “framework” to manage FTZ sites – codified in 15 CFR 400.2(c).
- ASF gives participating zones great flexibility to use a much simpler, faster MBM procedure to designate locations where companies are ready to use FTZ.
- A grantee can seek to participate in ASF by applying to FTZB to “reorganize” its zone under ASF.



INTERNATIONAL
TRADE
ADMINISTRATION

Why?

- The traditional site framework (TSF) had become outmoded. The designation of new FTZ locations for users under the TSF imposed a major burden on applicants, took a long time, and consumed too many government resources.
- TSF's limitations for MBMs often led to only temporary MBM site approvals and required "swapping" of acreage (which could revert later). A record-keeping nightmare!



INTERNATIONAL
TRADE
ADMINISTRATION

Why? (cont.)

- Too many unused FTZ sites (often designated for speculative reasons). Too little relationship between sites' FTZ designations and actual use. Number of speculative sites – not tied to specific users – made it hard for CBP to project resources needed for oversight.
- The ASF looked to address all of these shortcomings through a ground-up rethink: Grantee reframes FTZ to focus on serving broad area, can get simple MBMs for actual needs, and essentially all sites get “sunset” limits that remove designation if unused in 3 to 5 years.



INTERNATIONAL
TRADE
ADMINISTRATION

Key Points:

- Purpose of ASF: Enable a zone to use simple MBM process for future site designations after detailed, public process – including input from CBP – to approve ASF “service area” for the zone.
- Under ASF – as under TSF – FTZ space can only be designated or modified through FTZB or FTZ Staff action (with concurrence of local CBP).
- FTZ Staff consulted with grantees and others to develop ASF to be flexible (for users), focused (for govt. oversight), and predictable (benefits everyone).



INTERNATIONAL
TRADE
ADMINISTRATION

Key Points (cont.):

- CBP HQ concurred on the ASF concept as part of FTZB considering whether to adopt the ASF.
- There is no change to CBP operator/site activation procedures under the ASF.
- ASF does not change grantee/operator structure. Activation of site still requires that specific site first be approved by FTZB or Staff (with local CBP concurrence) and that grantee concur on activation.



INTERNATIONAL
TRADE
ADMINISTRATION

Terms and Concepts:

- “Service Area” is the geographic area where grantee wants to be able to propose sites for specific users.
 - Most commonly will be named counties, with grantee writing to each county in proposed Service Area at application stage.
 - Entire proposed Service Area must meet the ordinary FTZ adjacency requirement (within 60 miles/90 minutes’ driving time of the CBP port of entry limits).
 - Defining Service Area up front eliminates need for full FTZ Board processes (versus MBM action by FTZB staff) when new potential zone users appear and need FTZ designation quickly.



INTERNATIONAL
TRADE
ADMINISTRATION

- A “Magnet” site is one selected by grantee based on ability to attract multiple potential FTZ operators/users.
 - Designated only via FTZ Board action.
 - Akin to traditional FTZ site (industrial park, port facility, etc.) designated in advance – essentially speculatively – to attempt to draw FTZ operators/users.
 - Magnet sites are not the true focus of the ASF, and the ASF sets a general goal of six or fewer Magnet sites per grantee.



INTERNATIONAL
TRADE
ADMINISTRATION

Example of Magnet Site (outlined in red)





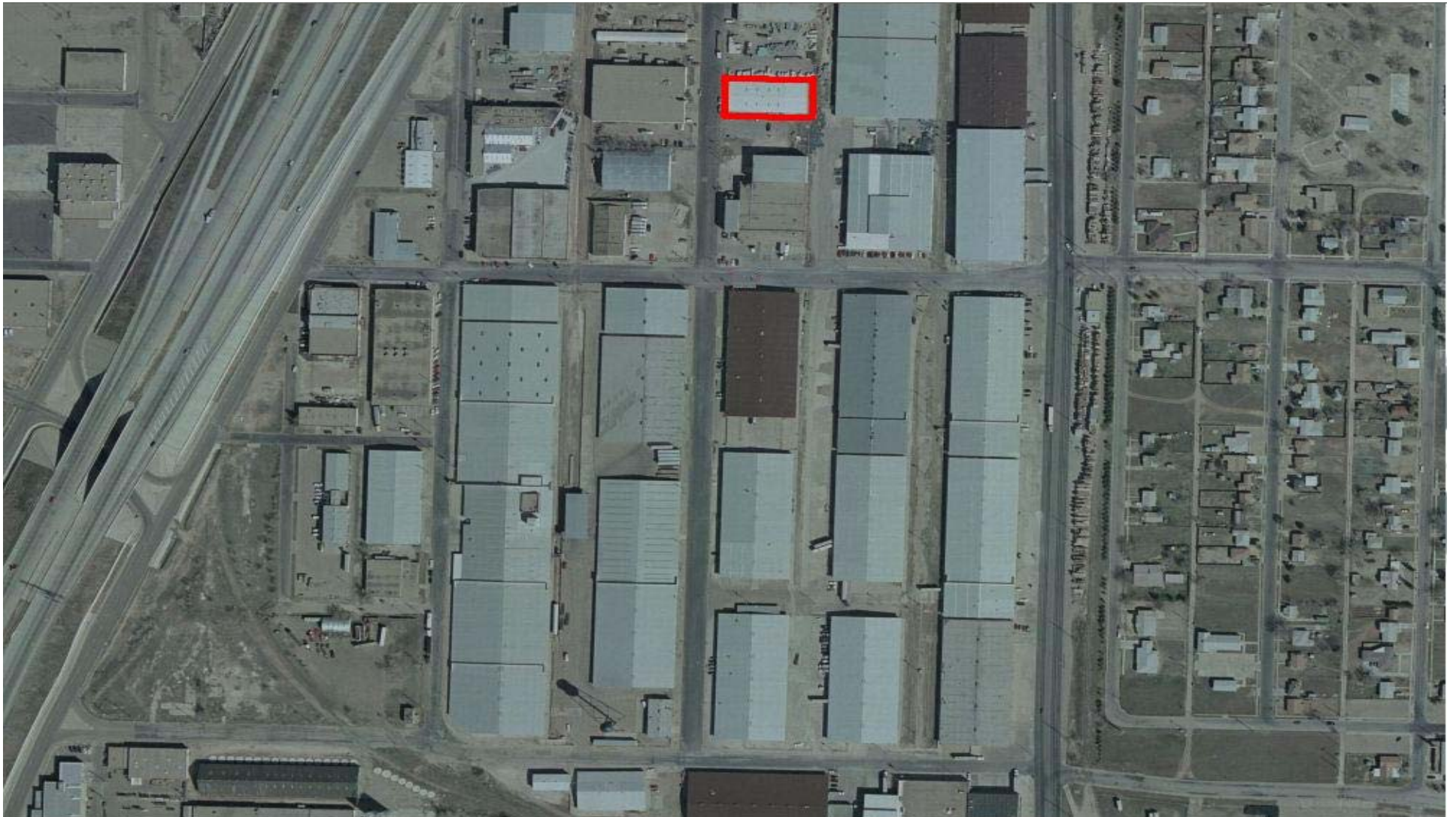
INTERNATIONAL
TRADE
ADMINISTRATION

- A “Usage-Driven” site (can also be termed a “subzone”) is designated for a company to conduct FTZ activity.
 - Can be designated by FTZB staff via simplified MBM (with no swapping of acreage required) – with local CBP concurrence.
 - Designation tied to a named company and limited to the space needed for that company’s use.
 - If the company vacates its designated Usage-Driven site, the FTZ designation automatically terminates. (A new Usage-Driven MBM would need to be done if a subsequent occupant of the space wanted to use FTZ procedures.)



INTERNATIONAL
TRADE
ADMINISTRATION

Example of Usage-Driven Site (outlined in red)





INTERNATIONAL
TRADE
ADMINISTRATION

- “Activation Limit” is cap on amount of space that can simultaneously be in CBP “activated” status.
 - ASF includes standard 2,000-acre activation limit for each zone – which had long been standard FTZB practice for large zones.
- Ongoing “Sunset” tests remove unused sites.
 - Standard five-year sunset period for Magnet sites (applicant can request longer sunset on case-specific basis but request must be justified; possible waiver of sunset for one site).
 - Three-year sunset period for all Usage-Driven sites.



INTERNATIONAL
TRADE
ADMINISTRATION

- “Sunset” tests (cont.).
 - Sunset deadline for each Magnet site extended for add’l. five years based on activation during the sunset period.
 - Sunset deadline for each Usage-Driven site extended for add’l. three years based on admission of foreign-status mdse. for *bona fide* customs purpose during sunset period.
 - FTZB web site lists all sites of each FTZ, including each site’s sunset date.
- Grantee may bring any number of existing FTZ sites into the ASF as Magnet sites. Sunset tests (with five-year default period) automatically remove sites not used during that initial “transitional” phase.



INTERNATIONAL
TRADE
ADMINISTRATION

Application Process:

- To participate in ASF, a grantee must apply to FTZB to “reorganize” its zone under ASF.
- Simple application format with four possible application sections to complete:
 - Part One: Standard Info. Required
 - Part Two: Info. on Subzone/Usage-Driven Site (if applicable)
 - Parts Three and Four: General and Site-Specific Info. on New/Modified Magnet Site (if applicable)
- As with other types of applications, FTZB decisions take into account the comments from local CBP.



INTERNATIONAL
TRADE
ADMINISTRATION

Application Process (cont.)

- **It is essential for local CBP to address in their comments to the FTZB whether:**
 - **the entirety of the proposed Service Area meets the adjacency requirement; AND,**
 - **CBP could actually serve Usage-Driven FTZ sites across the zone's proposed Service Area.**
- In a few parts of the country, closely clustered CBP Ports of Entry may lead to grantees proposing partially overlapping Service Areas. A major consideration for FTZB is whether the overlap would cause problems for CBP's oversight of the zones.



INTERNATIONAL
TRADE
ADMINISTRATION

The Bottom Line: A FTZ program that's both more flexible and more focused.

- By enabling Usage-Driven site process – with CBP's concurrence on proposed Service Area and again for each proposed new site – across each approved Service Area, the ASF dramatically simplifies and accelerates designation of sites for companies with real FTZ needs.
- At same time, the ASF is resulting in far fewer unused, speculative FTZ sites through the “use-it-or-lose-it” sunset limits that will apply to virtually all sites.



INTERNATIONAL
TRADE
ADMINISTRATION

Other questions? Do not hesitate to contact the FTZ Staff:

| Region | States | Staff Contact |
|----------|--|--|
| Northern | Connecticut, Illinois, Indiana, Iowa, Kentucky, Maine, Massachusetts, Michigan, Minnesota, New Hampshire, New York, Ohio, Pennsylvania, Rhode Island, Vermont, Wisconsin | Liz Whiteman (202) 482-0473 Elizabeth.Whiteman@trade.gov |
| Eastern | Alabama, Delaware, Florida, Georgia, Maryland, New Jersey, North Carolina, South Carolina, Tennessee, Virginia, West Virginia | Chris Kemp (202) 482-0862 Christopher.Kemp@trade.gov |
| Central | Arkansas, Kansas, Louisiana, Mississippi, Missouri, Nebraska, North Dakota, Oklahoma, Puerto Rico, South Dakota, Texas | Camille Evans (202) 482-2350 Camille.Evans@trade.gov |
| Western | Alaska, Arizona, California, Colorado, Hawaii, Idaho, Montana, Nevada, New Mexico, Oregon, Utah, Washington, Wyoming | Qahira El-Amin (202) 482-5928 Qahira.El-Amin@trade.gov |